

Ascend

by Lushescapes

Learning Beyond Borders



LUSHESCAPES



ASCEND

by Lushescapes

Lushescapes empowers students through immersive learning, global exploration, and transformative growth beyond the classroom.



Applied Skills

Hands-on learning experiences that build real-world competencies.



Cultural Exploration

Immersive journeys that foster global awareness and understanding.



Nurtured Development

Holistic growth that inspires confidence, leadership, and personal transformation.



Czech-In to Art: Prague Unveiled

25th - 30th April

Exclusively Designed for Dubai International Academy



Day 1: Arrival in Prague



Upon arrival at Prague Airport, guests will be greeted and assisted through immigration formalities before transferring comfortably to the hotel.

Settle in and enjoy your first evening in the enchanting capital of the Czech Republic, known for its fairy-tale architecture and timeless charm.

Overnight at Mama Shelter or similar

Meals: Dinner



Prague, Czech Republic

} the capital of the Czech Republic, is a city of timeless beauty, known for its stunning medieval architecture, romantic bridges, and vibrant cultural scene. Nicknamed the “City of a Hundred Spires,” it blends Gothic, Baroque, and modern design, offering visitors a captivating journey through centuries of European history.



Day 2: From Royal Grandeur to Cubist Masterpieces



The day begins with a guided city tour of Prague, taking you through its historic heart to the iconic **Prague Castle**, a UNESCO World Heritage Site and one of the most significant cultural landmarks in the country. Explore the majestic courtyards, St. Vitus Cathedral, and sweeping views over the city's red rooftops. As part of the tour, **students will pause for a sketching activity** at one of the scenic viewpoints—an inspiring opportunity to creatively capture the city's skyline and architectural charm. The morning concludes with a leisurely lunch in a local restaurant.

In the afternoon, dive into Prague's lesser-known artistic identity with a captivating **Cubic Architecture** Tour led by a private expert guide. Discover remarkable early 20th-century works such as the House of the Black Madonna, Diamant House, and Teachers' Houses, each reflecting the sharp geometry and elegance of Cubism. The tour continues with **Rondocubism** highlights like Legiobank, Adria Palace, and the historic Myšák Café, culminating in a scenic drive along the Vltava River under Vyšehrad to see the striking Cubist homes by Josef Chochola, known for their crystal-like façades. The day concludes with dinner and reflections on Prague's unique artistic legacy.

Overnight at Mama Shelter or similar

Meals: Breakfast, Lunch and Dinner



HIGHLIGHTS OF THE DAY



St. Vitus Cathedral

a stunning Gothic masterpiece within Prague Castle, is the spiritual and architectural heart of the city. Its soaring arches, vibrant stained glass, and royal tombs make it a must-see highlight of Prague's rich history.



Vltava River

The Vltava River is the lifeblood of Prague, gently winding through the city and offering iconic views of its historic bridges and skyline. A cruise along its waters provides a peaceful and picturesque way to experience the city's charm.



Prague Castle

Prague Castle, overlooking the city, is a historic fortress complex dating back to the 9th century and one of the largest castles in the world. It houses palaces, churches, and museums, serving as both a cultural landmark and the official residence of the Czech president.



Day 3: Inspired by Art – From Museum Halls to Sketch Pads



Start your day surrounded by the swirling elegance and bold beauty of **Prague's Art Nouveau Museum**. Wander through stunning exhibits filled with ornate designs, flowing lines, and artistic flair — the perfect spark to get your creative energy flowing. It's more than a museum visit; it's a step into a dreamy world of inspiration!

After your visit, take a quiet moment for a guided **journaling session**—reflect on the art, architecture, and emotions stirred by the morning's experience. Capture thoughts, sketches, and impressions in your travel journal as a personal keepsake of your artistic journey.

In the afternoon, roll up your sleeves and let your imagination take over in a **hands-on drawing class**. Whether you're sketching like a pro or just doodling for fun, this is your chance to bring your ideas to life on paper. With lunch and dinner included, you'll be fueled up and ready to make art all day long!

Overnight at Mama Shelter or similar

Meals: Breakfast, Lunch and Dinner



HIGHLIGHTS OF THE DAY



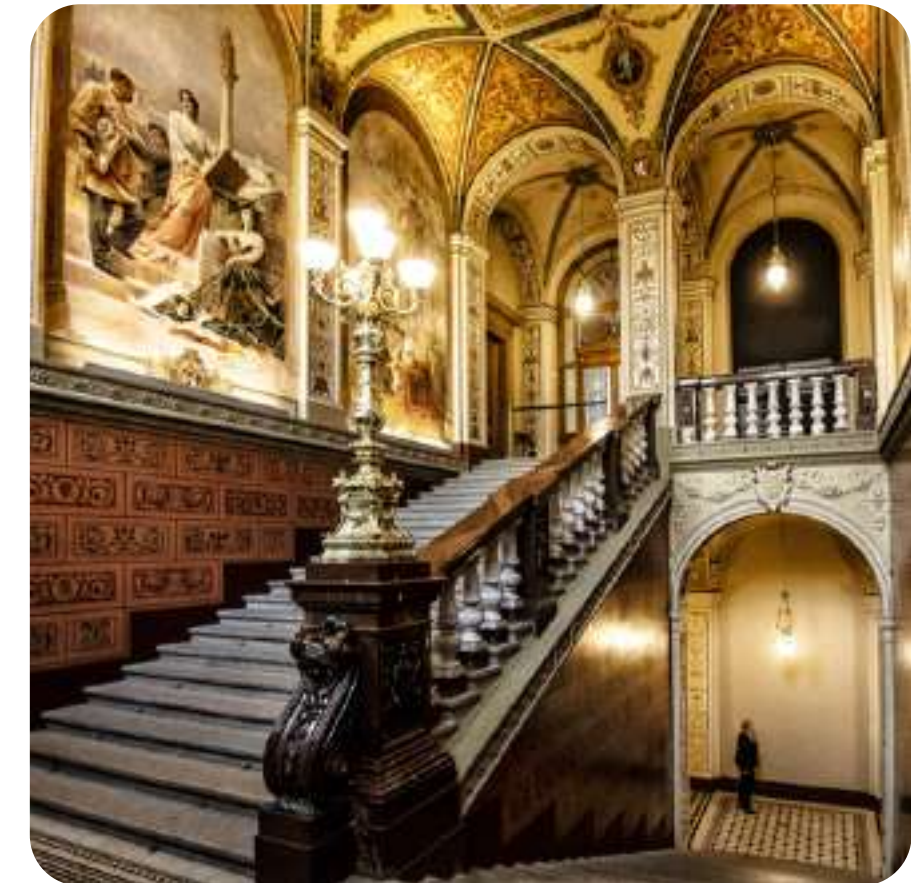
Hands on Drawing Activity

It's a moment to celebrate the successful completion of each element, ensuring everything is in place and ready to bring joy and learning to everyone involved. This final step reinforces the spirit of teamwork and dedication, turning ideas into lasting, meaningful experiences.



Journaling Session

The journaling session invites participants to reflect creatively on their experiences, capturing thoughts, emotions, and inspirations sparked by the day's activities. It offers a quiet, mindful pause to deepen personal connection with the art and surroundings.



Prague's Art Nouveau Museum

Prague's Art Nouveau Museum offers a captivating journey into the decorative and artistic style that flourished at the turn of the 20th century. Visitors can explore elegant furniture, intricate glasswork, and vibrant paintings that showcase the beauty and creativity of this iconic movement.



Day 4: Shaping Visions – Glass, Cubism, and Creative Craft



Start your morning with a fascinating presentation at a **traditional glassblower's workshop**. Watch as molten glass transforms into delicate shapes through the hands of skilled artisans — no blowing today, just an up-close look at the artistry behind one of the Czech Republic's most iconic crafts.

After lunch, dive into the bold world of geometric beauty at the **Museum of Czech Cubism**, guided by a private expert. Beyond the striking paintings and sculptures, the exhibit showcases elegantly angular furniture, unique housewares, and even a Cubist Bundt cake mold — all testaments to the movement's unexpected reach. You'll also catch a glimpse of imaginative architectural sketches for Cubist buildings that never made it off the page. The one-hour tour is sure to leave you seeing Prague's art scene from a whole new angle. Cap off the day with a delicious dinner.

Overnight at Mama Shelter

Meals: Breakfast, Lunch and Dinner



HIGHLIGHTS OF THE DAY



Traditional Glassblower's Workshop

Lemurs' Park is a 5-hectare private botanical garden and lemur reserve located 22 km southwest of Antananarivo, near the villages of Fenoarivo and Imerintsiatosika. Established in 2001 by Laurent Amouric and Maxime Allorge, the park aims to rehabilitate and reintroduce captive-born lemurs into the wild .



Museum of Czech Cubism

The Museum of Czech Cubism, housed in the iconic House of the Black Madonna, showcases groundbreaking early 20th-century Cubist art and design, including furniture, ceramics, and paintings. It offers a unique glimpse into this bold artistic movement through striking geometric forms and innovative works by leading Czech artists.



Day 5: Shifting Perspectives – River Views and Visual Illusions



Begin your day with a **relaxing cruise along the Vltava River**, taking in some of the most breathtaking views of Prague’s skyline. Glide past historic bridges, fairytale castles, and charming riverside scenes — it’s the perfect way to soak up the city’s magic from a whole new angle.

After lunch, dive into the joy of soy candle making! **Customize your own candle** with various jars, scents, and decorations. Enjoy a relaxed, unguided workshop, and take home a special handmade souvenir. After, step into a world where nothing is quite as it seems at the **IAM Illusion Art Museum** Prague. This mind-bending museum blends art with illusion, offering a modern, interactive take on visual storytelling. From optical tricks to perspective-shifting installations, every corner invites you to see — and question — the world differently. Wrap up the day with a delightful dinner and plenty of photo-worthy memories.

Overnight at Mama Shelter

Meals: Breakfast, Lunch and Dinner



HIGHLIGHTS OF THE DAY



Cruise along the Vltava River

Enjoy a scenic cruise along the Vltava River, offering breathtaking views of Prague's iconic landmarks from the water.



Soy Candle Making Workshop

Dive into the joy of soy candle making! Customize your own candle with various jars, scents, and decorations. Enjoy a relaxed, unguided workshop, and take home a special handmade souvenir.



IAM Illusion Art Museum

Experience mind-bending wonder at IAM Illusion Art Museum Prague, where immersive optical and trick art—from anamorphic 3D installations to interactive perspective puzzles—lets you step inside illusions and take unforgettable photos in the vibrant heart of the city



Day 6:
Masterpieces and
Memories – Art,
Shopping, and Farewell



Spend your final morning in Prague immersed in world-class art with a guided tour of the **National Gallery**. Led by expert lecturers and specialists, you'll gain deeper insight into iconic works and hidden gems across centuries of artistic expression — a fitting finale to your cultural journey.

After lunch, enjoy some free time to shop for souvenirs, gifts, or one last sweet treat before saying goodbye to the city. As evening falls, gather for a **farewell dinner** to reflect on your week of inspiration and adventure. Then it's off to the airport for your return home, with your sketchbooks full and your spirits lifted.

Meals: Breakfast and Lunch



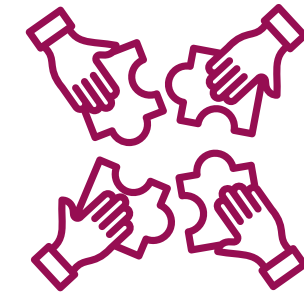
Flight Details

FLY DUBAI | FZ1773 | 25 APR | DXB PRG | 01 55 - 06 35
FLY DUBAI | FZ 1782 | 30 APR | PRG DXB | 21 15 - 05 25

Trip Inclusions



Flight Tickets thru Fly Dubai
(all taxes included)



Activities and Entrances as Per
Itinerary



All transfers throughout the whole
itinerary



Water bottles provided throughout
the trip



All Meals as
per Itinerary



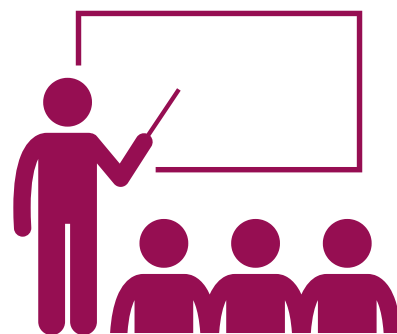
Accommodation in Twin Occupancy for students
and Single Occupancy for Chaperones and
Program Director



Premium Travel Insurance



Local English Speaking
Guide



Ratio 1:10 for teachers



Tips and Mandatory Gratuity



Trip Exclusions



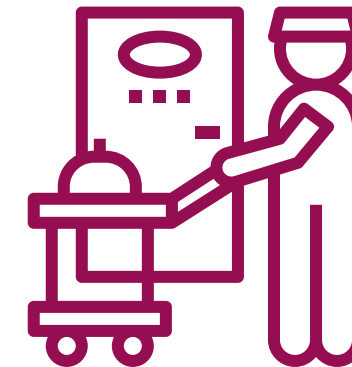
Personal Expenses



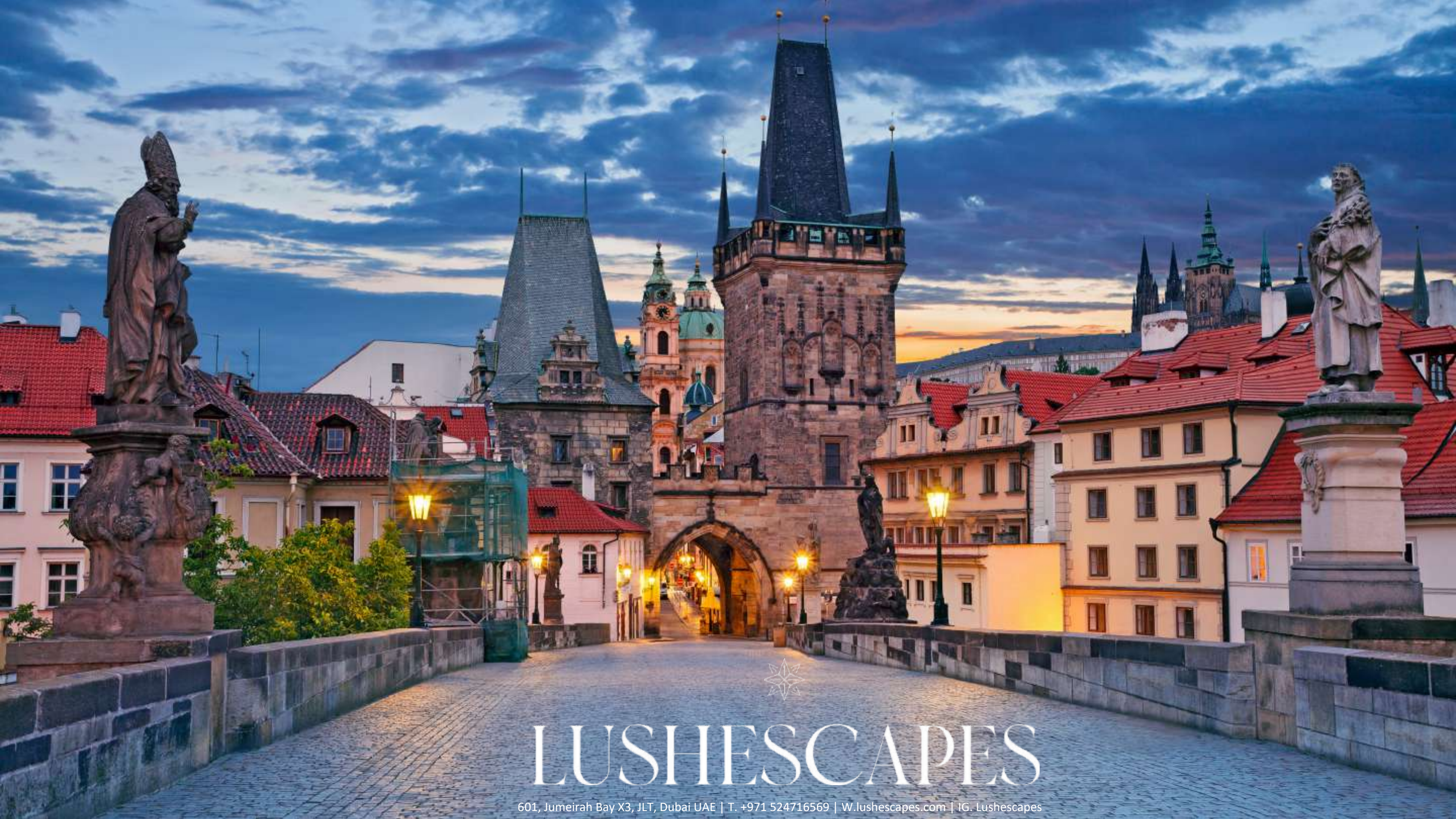
Visa Cost and Assistance



Any Other Service not Mentioned



Any Extra Room Service at Hotels



LUSHESCAPES

601, Jumeirah Bay X3, JLT, Dubai UAE | T. +971 524716569 | W.lushescapes.com | IG. Lushescapes